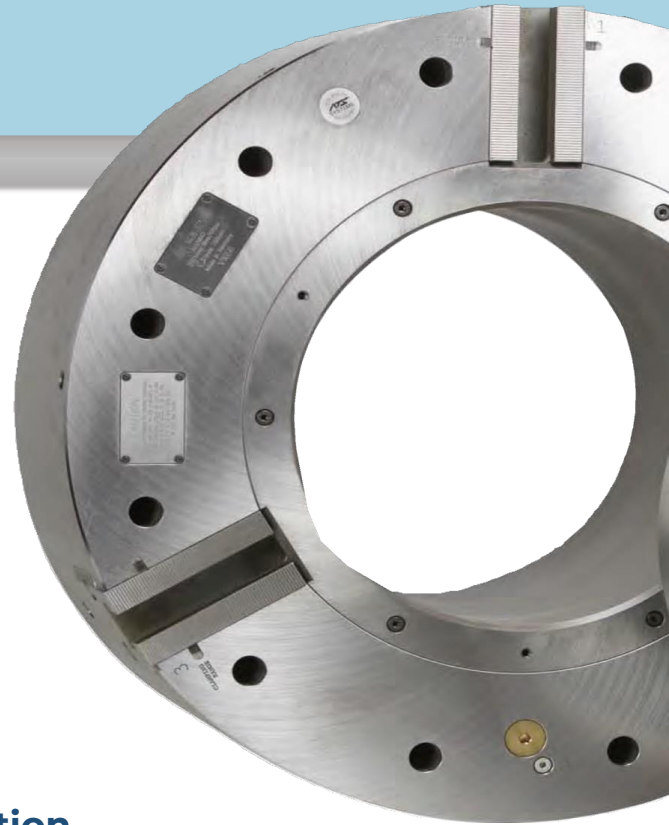
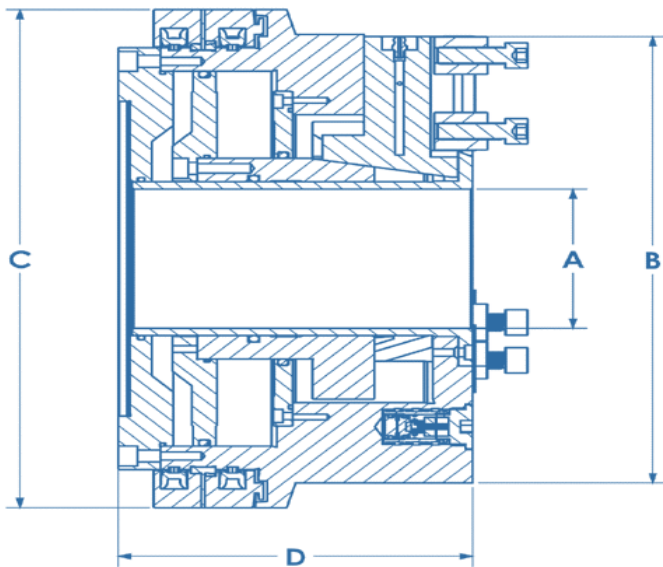


Big Mouth™ II

Specifications



Standard Models for General Chucking Application

Chuck Model		BP-200-52	BP 265-80	BP 315-105	BP 480-185	BP 500-230	BP 640-275	BP 800-375
Nominal Size								
Through Hole	A	2.05	3.15	4.13	7.28	9.06	10.83	14.76
Face Diameter	B	8.1	10.4	13.2	18.9	22.4	25.2	31.5
Rear Diameter	C	11.8	14.6	14.6	20.9	22.4	27.0	33.5
Length	D	5.3	5.8	6.2	8.8	8.8	10.3	12.0
Jaw Stroke/Jaw	In.	.165	.197	.197	.334	.334	.394	.472
Jaw Serration		1/16 x 90	1/16 x 90	1/16 x 90	3/32 x 90	3/32 x 90	3/32 x 90	3/32 x 90
Maximum Speed	RPM	2800	2200	2200	1500	1300	1000	750
Max. Operating Pressure	PSI	120	120	120	120	120	120	120
Grip Force @90 PSI	Lbs. Total	13950	21400	19300	41860	44187	61600	61600

BT Series- Extended Jaw Stroke Models for Tubular Applications

Chuck Model		BT 4.1 ES	BT 7.3 ES	BT 10.8 ES	BT 12.8 ES	BT 14.8 ES
Through Hole	In.	4.13	7.28	10.82	12.80	14.76
Chuck Length	In.	7.9	11.1	11.1	12.1	12.10
Jaw Stroke/Jaw	In.	0.6	1.0	1.0	1.0	1.0
Jaw Serration		1/16 x 90	3/32 x 90	3/32 x 90	3/32 x 90	3/32 x 90
Swing Clearance	In.	14.9	21.7	26.7	29.4	31.4
Maximum Speed	RPM	2000	1300	1100	900	750
Normal Operating Pressure Range	PSI	60-90	60-90	60-90	60-90	60-90
Max. Operating Pressure	PSI	120	120	120	120	120
Weight	Lbs.	220	500	700	1200	1300

Specifications subject to change without notice

Workholding: Ultimate Chuck | Air Chucks | Cylinders | Collet Chucks | Steady Rests | 5th Axis
Coolant Management: High-Pressure Filtration | Chillers | Mist Collection | MasterAll Fluids | Fire Suppression
Automation: Barfeed | Rotary Tables | Xcellerate | Tombstones | Trunnions | Indexers

