



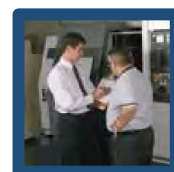
Big MouthTM II

Completing Machine Tool Investments

**2-YEAR WARRANTY
Standard Terms
With ATS Systems
Installation and Training**

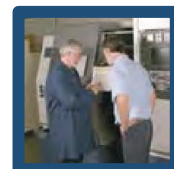
**Leading-Edge
Technology**

Sales



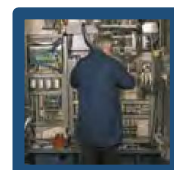
Free In-plant
cost-justification,
engineering analysis

Service



Installation by your local
ATS Service Engineers.
Our technicians train your
operating personnel

Support



Fix-it-first,
ask-questions-later
service philosophy

- Faster production cycle times
- Less lathe wear and tear
- No Weekly valve maintenance
- Safer, test-in-place non-return valves

www.atssystems.us

30222 Esperanza, Rancho Santa, Margarita, CA 92688
Toll Free: 800.321.1833 or 949.888.1744
Email: sales@atssystems.us

Big Mouth™ II

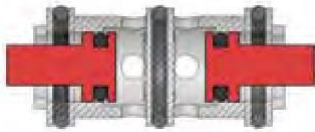
Completing Machine Tool Investments

All Big Mouth Chucks

- ✓ New Face-Seal Type Non-Return
- ✓ Valve: No Weekly Maintenance

Old Design

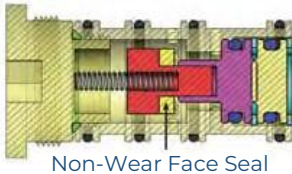
High Maintenance Sliding Mechanism



- Depends on 5 sliding “O-rings” for sealing
- Requires weekly disassembly to clean and lube
- Valve removed from chuck during pressure test
- Valve not tested for leaks

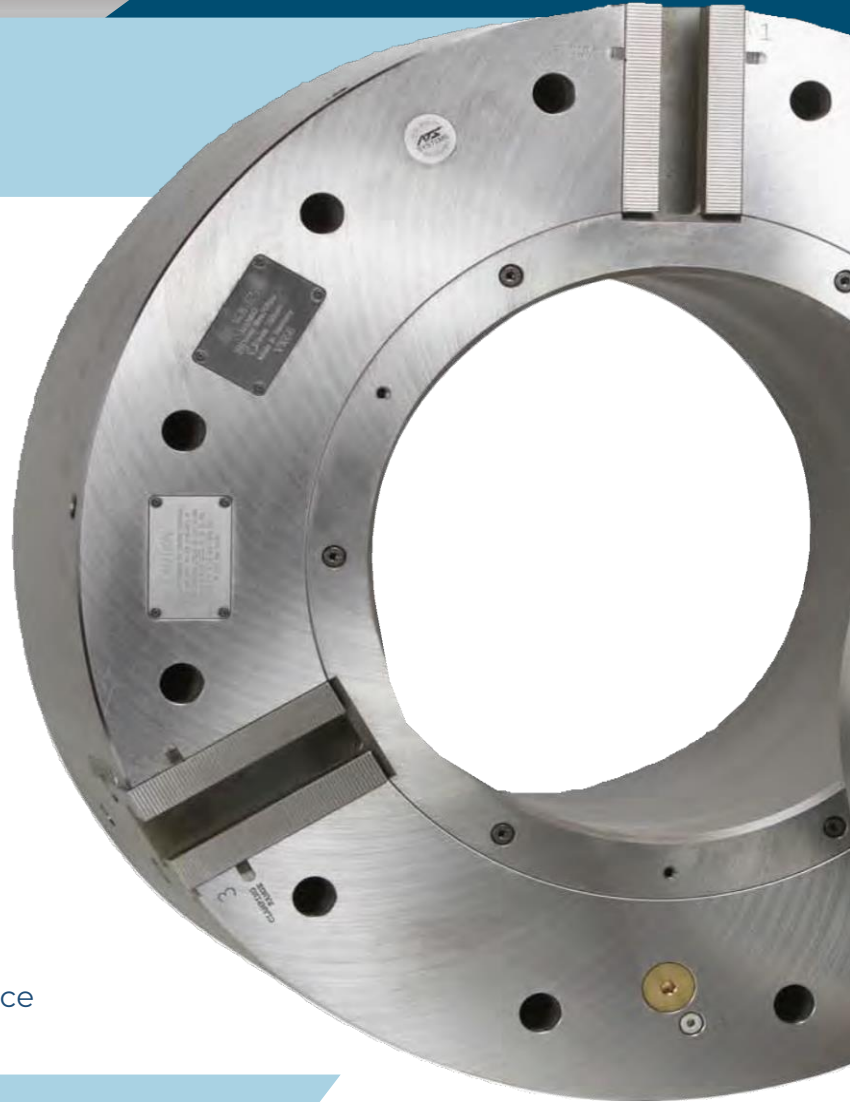
New Design

Face Seal, Requires No Weekly Maintenance



Non-Wear Face Seal

- Long life, no weekly maintenance required
- Pressure test chuck and valves with valve in place

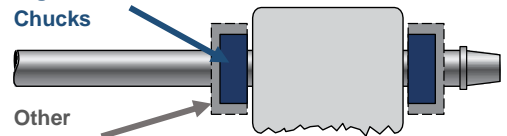


Unique To BT Model Tubular Series

- ✓ Smaller profile design: faster cycle times, less wear and tear
- ✓ Valve: no weekly maintenance

Big Mouth II Chucks

Other Chucks



Faster spindle acceleration and deceleration

- ✓ Moment of inertia reduced by up to 50%

Reduced wear and tear on the spindle drive and brake

- ✓ Weight reduced on most popular sizes by 40%

Correct clamping pressure for tubular workpieces

- ✓ Reduced piston size and air volume, faster actuation

Lower operating cost

- ✓ Less electrical energy consumed

Big Mouth™ II

All Other Large
Bore Chucks
Now Obsolete



Jaw Jogging Exclusive Feature

- ✓ Other brands require the chuck to fully open or fully close each actuation.
- ✓ Only with the Big Mouth™ II can you jog the jaws open slightly to facilitate shimming a crooked pipe to make the end run true.
 - Close Jaws, jog the spindle, and note workpiece run-out.
 - Jog Jaws open 1/4" or whatever amount you like, insert shims, and close jaws.
 - Repeat as required With Big Mouth™ II, it's easy.

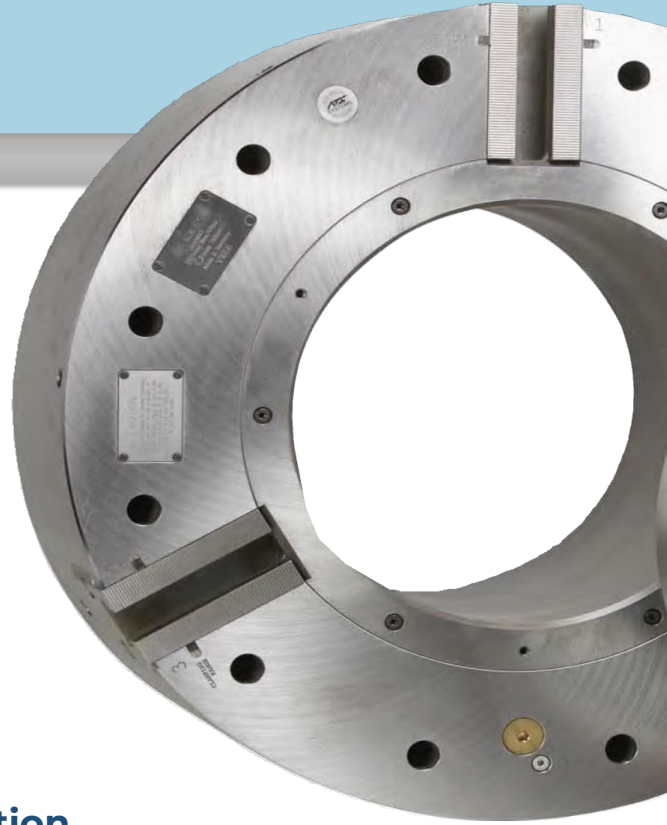
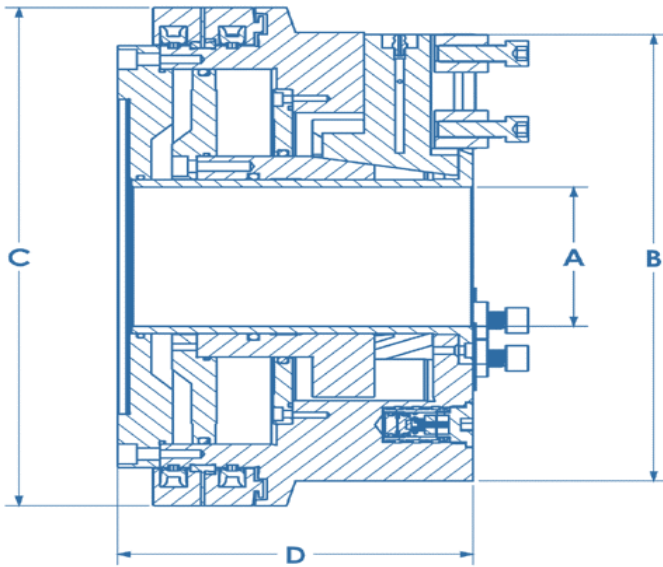
Easy Mount No Disassembly and Reassembly on Machine

- ✓ Assembled chuck bolts directly to the adapter plate
- ✓ No cumbersome chuck assembly on the lathe spindle
- ✓ Mounting bolts do not require internal sealing



Big Mouth™ II

Specifications



Standard Models for General Chucking Application

Chuck Model		BP-200-52	BP 265-80	BP 315-105	BP 480-185	BP 500-230	BP 640-275	BP 800-375
Nominal Size		8"	10"	13"	19"	22"	25"	31"
Through Hole	A	2.05	3.15	4.13	7.28	9.06	10.83	14.76
Face Diameter	B	8.1	10.4	13.2	18.9	22.4	25.2	31.5
Rear Diameter	C	11.8	14.6	14.6	20.9	22.4	27.0	33.5
Length	D	5.3	5.8	6.2	8.8	8.8	10.3	12.0
Jaw Stroke/Jaw	In.	.165	.197	.197	.334	.334	.394	.472
Jaw Serration		1/16 x 90	1/16 x 90	1/16 x 90	3/32 x 90	3/32 x 90	3/32 x 90	3/32 x 90
Maximum Speed	RPM	2800	2200	2200	1500	1300	1000	750
Max. Operating Pressure	PSI	120	120	120	120	120	120	120
Grip Force @90 PSI	Lbs. Total	13950	21400	19300	41860	44187	61600	61600

BT Series- Extended Jaw Stroke Models for Tubular Applications

Chuck Model		BT 4.1 ES	BT 7.3 ES	BT 10.8 ES	BT 12.8 ES	BT 14.8 ES
Through Hole	In.	4.13	7.28	10.82	12.80	14.76
Chuck Length	In.	7.9	11.1	11.1	12.1	12.10
Jaw Stroke/Jaw	In.	0.6	1.0	1.0	1.0	1.0
Jaw Serration		1/16 x 90	3/32 x 90	3/32 x 90	3/32 x 90	3/32 x 90
Swing Clearance	In.	14.9	21.7	26.7	29.4	31.4
Maximum Speed	RPM	2000	1300	1100	900	750
Normal Operating Pressure Range	PSI	60-90	60-90	60-90	60-90	60-90
Max. Operating Pressure	PSI	120	120	120	120	120
Weight	Lbs.	220	500	700	1200	1300

Specifications subject to change without notice

Workholding: Ultimate Chuck | Air Chucks | Cylinders | Collet Chucks | Steady Rests | 5th Axis

Coolant Management: High-Pressure Filtration | Chillers | Mist Collection | MasterAll Fluids

Automation: Barfeed | Rotary Tables | Xcellerate | Tombstones | Trunnions | Indexers

