

PRODUCT LINE CARD

HIGH PRESSURE COOLANT / FILTRATION



UltraFlex



Mist Collector



EcoClean



TL Series



Coolant Chiller



CoolMag



CoolVac



MasterAll Fluids

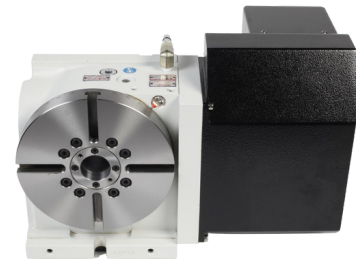
AUTOMATION



Bar Feeders

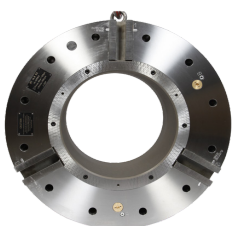


Robotic Systems



Rotary Tables

WORKHOLDING



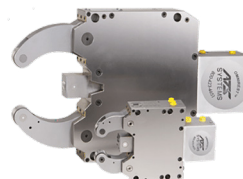
Big Mouth
Air Chucks



Collet
Chucks



Ultimate
Chuck



Steady Rests



Cylinders



5th Axis



PRODUCT LINE CARD



COOLANT AND FILTRATION PROCESS SOLUTIONS

ATS SOLUTION

SOLVING FOR

CoolJet High Pressure

- ✓ Stringers or blue chips
- ✓ Poor chip evacuations/re-cutting chips
- ✓ Poor part finish
- ✓ Poor tool life and tool failure
- ✓ Slow speeds and feeds

CoolJet Chiller

- ✓ Coolant temperature fluctuations
- ✓ Heat related tolerance issues

MistBuster

- ✓ Poor shop air quality (mist and smoke)
- ✓ Suitable for water and oil coolants

MasterAll Coolants

- ✓ Coolant issues such as foaming or poor tool life

CoolVac

- ✓ Excessive buildup of chips in the machine tank

EcoClean

- ✓ Bad-smelling coolant
- ✓ Cast metal or grinding application issues

Oil Skimmer

- ✓ Poor tool life
- ✓ Coolant contaminated way lube oil

CoolMag

- ✓ Dirty coolant (oil)
- ✓ Filtration issues in ferrous metal applications

WORKHOLDING SOLUTIONS

ATS SOLUTION

APPLICATION

UC3 Ultimate Chuck

- ✓ High mix of parts needing to change chuck jaws and parts quickly

ATS Systems Big Mouth Air Chucks

- ✓ Running large diameter bars or pipes

ATS Systems Collet Chucks

- ✓ Running bar stock and needing a better and more accurate workholding solution than a 3-jaw chuck

Steady Rests

- ✓ Running long bars or shafts requiring added support

AUTOMATION SOLUTIONS

ATS SOLUTION

APPLICATION

Rotary Tables

- ✓ Vertical machines looking for a higher level of automation and increased productivity

ATS Systems Barfeeders

- ✓ High level of automation running bar stock

Robotic Systems

- ✓ High mix, low volume parts runs looking for a high level of automation

FOR MORE INFORMATION



800-321-1833



sales@atssystems.us



www.atssystems.us

